



Early Learning Reimagined!

**A new curriculum framework, utilizing
an integrative approach to learning**



Curriculum Structure

Educational Pillars

Pillar One: Holistic Curriculum

- Standardized Components
- Inquiry Approach
- Play-Based

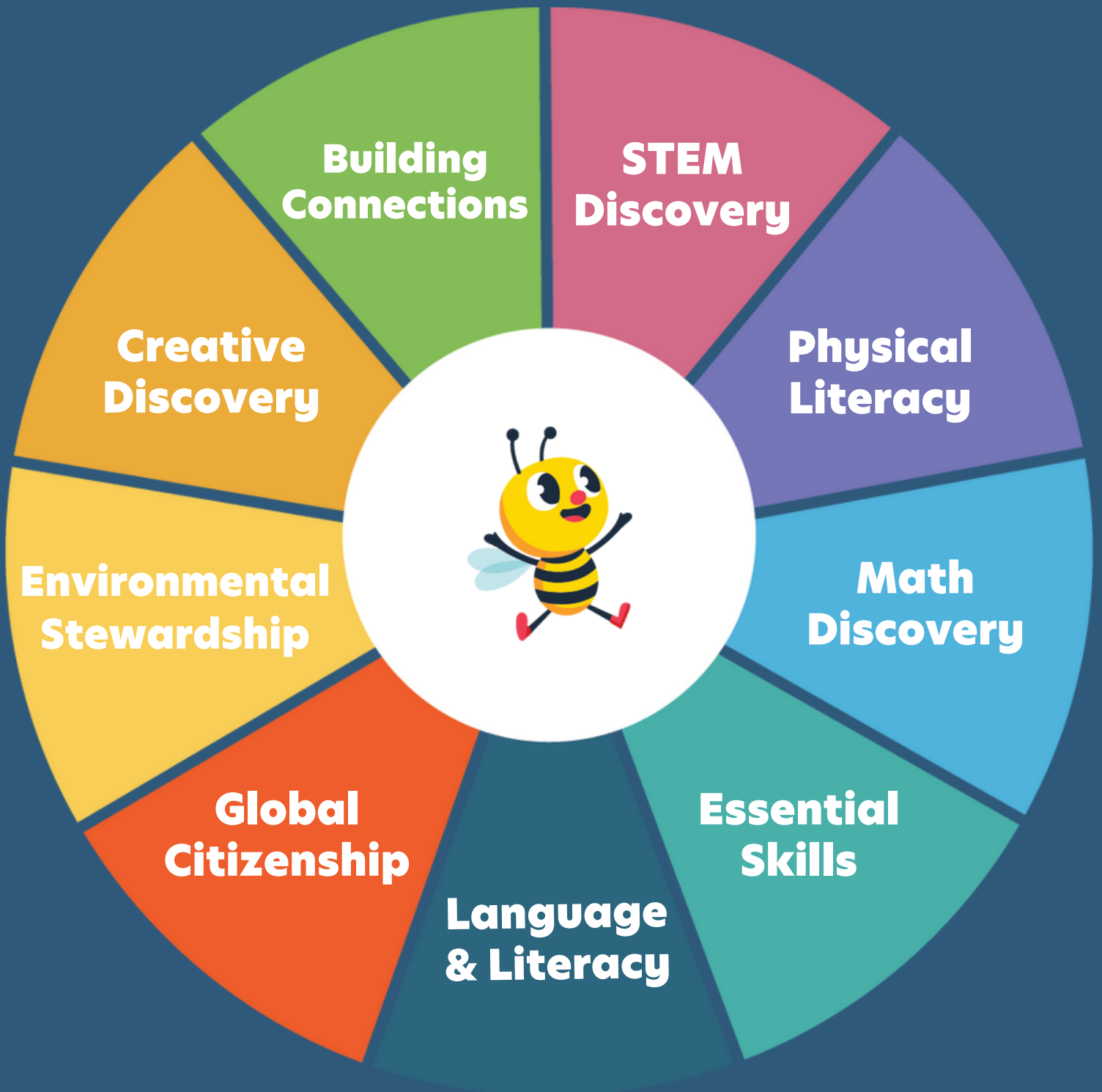


Pillar Two: Intentional Teaching Practice

Pillar Three: Inspiring Learning Environment



Focus Areas



Curriculum Structure

Daily Activities

Daily feature activities include Math Discovery, Creative Discovery, Physical Literacy, Language and Literacy, and Building Connections, through which children learn social-emotional skills and their sense of value and belonging in a learning community.



Math Discovery

is all about building math concepts according to developmental scope and sequence of skills. Materials and framing may be changed out to meet with current interests, paired with targeted skill development.



Creative Discovery

focuses on self expression and joyful interaction with open ended materials, mediums, and tools. Process driven creativity is the goal.



Language & Literacy

is all about creating a love for language, an awareness of print concepts, the magic of mark making and ability to decode the world of sound.



Physical Literacy

will be a daily focus and includes both standardized and inquiry developed content. Ensure time spent in your outdoor learning environments showcases opportunities for learning while developing a love for being active.



Building Connections

focuses on developing social emotional skills within the context of our classroom community. Belonging, connecting, cooperation, and uniting are all embedded within this topic.

Curriculum Structure

Weekly Activities

Our weekly enrichment topics include STEM Discovery, Environmental Stewardship, Global Citizenship and Essential Skills . These are additional pieces of content that educators can implement on afternoons of their choice throughout each week based on the most opportune moments for meaningful investigation.



STEM Discovery

STEM: Science, Technology, Engineering and Math are all incorporated into hands- on weekly projects that enable children to engage with peers to become critical thinkers and early innovators. Children will gain experience with the scientific process, using tools to solve problems, and putting their design and engineering ideas to the test, all while applying math concepts to help navigate each of these challenges!



Environmental Stewardship

focuses on children learning about our environment and how we can help keep it safe is vital to the future of our world. Children will explore nature, discuss ways of keeping it safe and take action in their learning communities to help make our world a better place.



Essential Skills

this enrichment focus is inspired by Montessori Philosophy and provides young learners with tools needed to gain independence and confidence as they build essential skills along the way.



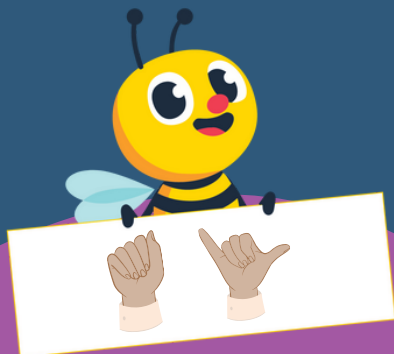
Global Citizenship

will have children explore the world around them, learning the importance of values, culture, kindness and respect for all people, starting with their peers. Global Citizenship is not just being an active member of society, but being someone that contributes by celebrating and welcoming the diversity among us.

Curriculum Structure

Monthly Activities

Our monthly activities provide additional layers of enhanced learning opportunities that could also lead to further inquiry. These activities include Sign Language, Essential Skills, Artist of the Month and Physical Literacy.



Sign Language

our sign language focus is an increased early language development program that promotes brain growth and motor skill acquisition.



Artist of the Month

enables children to become creative thinkers as they explore art through different mediums and techniques.



Investigation Studies

Sensory

Sensory Study encourages children to explore their world through sensory investigation, discovering the power of their senses. Along this journey, children will be captivated by the intriguing nature of sensory learning, utilizing their sense of smell, touch, taste, sight, hearing, proprioception, and vestibular inquiry.



Culinary

Culinary Study will encourage children to lay the foundation of their culinary understanding through authentic hands-on processes. This study will introduce children to fundamentals of culinary arts including meal preparation, food exploration, healthy eating and so much more. Children's imaginations will transform them into qualified chefs as they make connections and discoveries along the way.

Self

Our Self Study is a celebration of individuality and uniqueness, one that focuses on who a child is and who they want to become. It is an opportunity to empower children to look within themselves and discover the qualities that make them unique.

All Around the World

Our All Around the World Study is an exploration of the world around us. Children will embark on an imaginative adventure as they discover elements of our world that make it special. From cultures to architecture to languages and environments, children will seek the fun while exploring the world.

Community

Our Community Study is a celebration of group collaboration and unity. With a focus on teamwork and understanding how each individual impacts the larger group, the Community Study can help children develop a social connection and sense of belonging within their classroom environment.

Investigation Studies

Transportation

Transportation investigation involves many forms of movement from place to place and ultimately expands upon a child's world view. By giving children the opportunity to question, wonder and be curious about how things move and transportation in general, their exploration on common topics such as transportation allows them to begin to make meaning within their own world.

Construction

A construction study teaches children core skills as they explore and learn about the world around them. By providing a unique lens into building, purpose of shapes, use of machines and spatial orientation. Children will begin to develop an interest in construction through the development of their concentration, shape recognition, problem solving skills, and spatial awareness as they begin to build, create and make discoveries through exploration and trial and error along the way.

Animal

The Animal Study provides curious children with the opportunity to explore and understand the animals within our world. By capturing their sense of wonder on the subject of animals, learning takes place in multiple forms when children begin to dive deep into the world of animals they love and know, appreciate the uniqueness of each, and develop a love and understanding of each animal they study.

Nature

The nature study provides children with the opportunity to develop and foster a love and understanding for the natural world around them. With a combination of sensory learning, environment exploration and a little (or a lot of) dirt, children will be able to have richer experiences outdoors as they begin to appreciate and respect nature.

Water

Water studies allow children to become familiar with an element of the earth and get introduced to the physical geography including lakes, islands, bays etc. Children will also grow through gross and fine motor development and learn as they make discoveries exploring the physical properties of water, the many uses of water such as how water helps our bodies and the environment, the cycle of water in our natural world and so much more.